



Coffee Brief

Date: June 22, 2022

Preparedness Levels & Alaska Fire Activity

Alaska	4
National	2

<p>Light Initial Attack Activity New Fires and Acres: 20 Fires 4,693 Acres</p>

There are currently 13 staffed fires. Yesterday's large fire growth was 15,884 acres.
 Moving to PL 4 at noon 6/22

Sources: National and AICC Situation Report

Resources

Aviation within Alaska	
Jumpship	5
Air Tactical	5
Air Tankers	3
Scoopers	
SEATS	14
Utility	7
T1 Helicopter	
T2 Helicopter	13
T3 Helicopter	6

Crews Committed within Alaska		
Type 1	1	AK
Type 2	2	AK
Type 21A	1	AK
Module	1	AK
Type 1	10	L-48
Type 2		L-48
Type 21A		L-48
Module		L-48
Total Crews	15	

AVIATION: 10 SMJ's available ~ 73 SMJ's committed.

CREWS: Nothing in addition to table.

MISCELLANEOUS:

10 additional SMKJ boosters from the lower 48 over the next couple days.

2 CL-415's expected from the lower 48 on 6/23.

AK IMT2 Black Team is currently in command of the Lime Complex.

AK IMT2 Green Team is currently in command of the East Fork incident.

Source: IROC Reports

Weather Summary

Thunderstorms will be a factor for Alaska once again today, with today's action mostly over South Central and the eastern Interior. Temperatures for the Interior will be roughly near normal, with widespread readings in the 60s and 70s today, and inland portions of South Central could reach 80. Temperatures over northwest Alaska will be cooler as a cold marine system transits the Chukchi Sea. The southeastern Interior and Panhandle will be cooler with some more wettings rains today. The overall wind pattern over mainland Alaska is not very strong today, with the notable exception being the southwest winds of 15 to 25 mph over northwest Alaska and across the northern Interior. Thunderstorms also have the potential to generate brief gusty local winds.

In the longer term, a high pressure system is set to build into Alaska by the weekend and then remain in the area. Such a change in pattern would bring widespread temperatures 5 to 10 degrees above normal and a reduction in the amount of shower and thunderstorm activity.

Source: Alaska 7-Day Outlook

Fuels/Fire Potential

Showers and thunderstorms have modified the fuels in many areas of Alaska's Interior. However, such precipitation is quite variable in space, so some areas received no precipitation at all. The background grids depicting the fuel indices in the AKFF software has overdone the impact of this precipitation, such that values of SAR and GAR are too low across much of the Interior and South Central Alaska. When encountering a mis-match between a point value based on actual weather observations and the background grid, please discount the grid and go with the points.

Source: Alaska 7-Day Outlook

Fuels Status [Alaska Fire and Fuels Map](#)

A Fuels and Fire Behavior Advisory has been issued for Alaska.

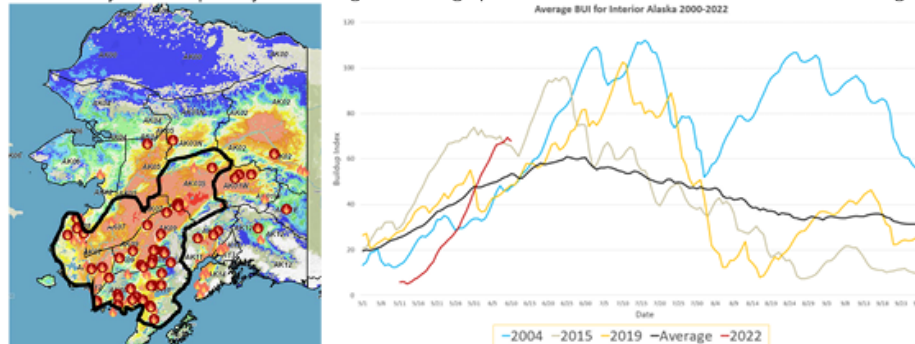
Fuels and Fire Behavior Advisory Southwest and Central Interior Alaska

Valid: June 12 – June 25, 2022

Subject: Exceptional landscape flammability and widespread ongoing large fire growth.

Discussion: The Buildup Index (BUI) is the best indicator of seasonal severity and overall flammability of fuels in Alaska. It represents deeper drying in the duff layers and greater fuel availability. Large fire growth occurs from mid-June to mid-July surrounding the summer solstice when long days and rapid drying can produce elevated BUI levels. Southwest Alaska normally experiences shorter periods of high flammability as they are prone to intermittent rain due to marine influences. Beginning in the middle of May, southwest Alaska has experienced continued hot, dry, and windy conditions, drying out fuels, retarding green-up and producing significant large fire growth. Many fires in southwest Alaska have experienced exceptionally large fire growth over the last week, which is unusual for the area.

Difference from normal conditions: The attached graph shows the current 2022 BUI trend for the Interior of Alaska compared to other busy fire seasons. 2022 has been above average BUI since May 31, and higher than 2015 levels since June 6. Southwest Alaska has already experienced abnormally large fire growth for this time of year. Multiple days of wetting rain adding up to more than one inch will be needed for lasting relief.



Concerns to Firefighters and the Public:

- Spruce stands are extremely flammable, will ignite readily, exhibit rates of spread more than one mile per hour, torch, and spot prolifically up to ¼ mile or more, and exhibit intense crown fire behavior.
- Temperatures above 80 degrees and RH below 30% are important thresholds for rapid spread and crown fire behavior.
- Green fuels are stressed and encouraging spread into riparian areas and less flammable hardwood forests.

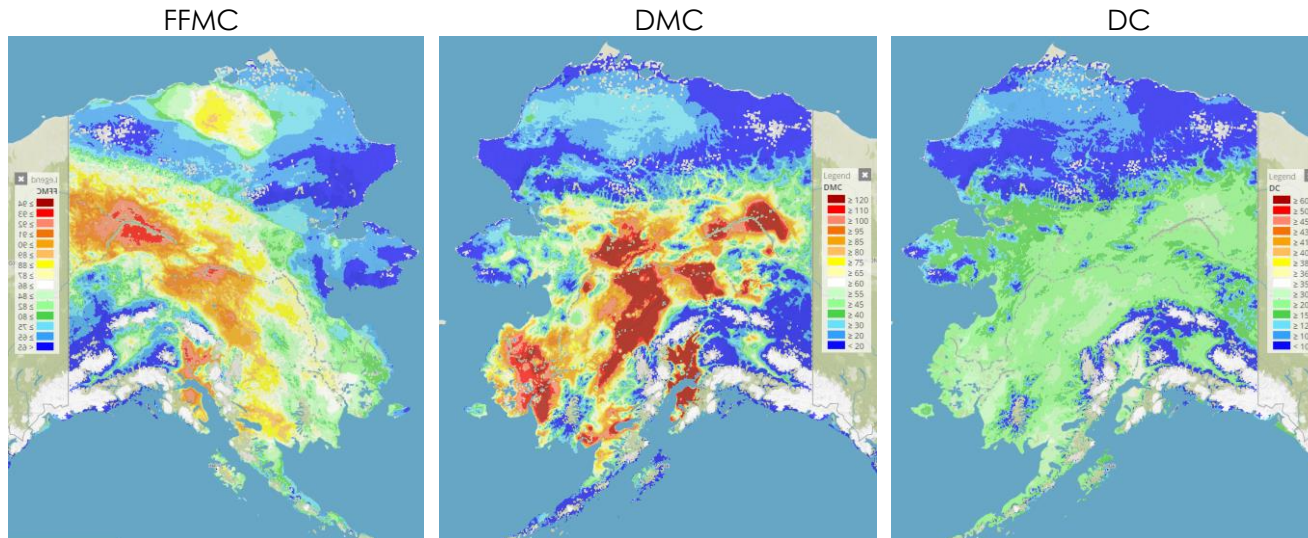
Mitigation Measures:

- Ensure that you can recognize hazardous fuel types including tundra that is exceptionally dry.
- Understand the triggers and thresholds for problem fire behavior.
- Monitor forecasts and indices to anticipate areas of increased flammability and extreme fire behavior.
- Maintain clear communications when working around active fires.

Area of Concern: Southwest Alaska, and the central Interior. Conditions over the next few weeks may spread to include a wider portion of Alaska.

Issued By: Alaska Interagency Coordination Center Predictive Services

Click on the following images for direct links to the maps.



For additional fuels information visit <https://akff.mesowest.org/>

Sources: AICC Predictive Services – Fuels/Fire Danger web page, Alaska Fire & Fuels web page

Prioritized Incident Details

This information will be available after the next AMAC meeting.

Source: AMAC Incident Prioritization List, ICS-209s

The Coffee Brief is posted at PLs 4 and 5 only.

